

Setting up FPT 40 in Time Guardian with the CommStick

458 [David Lopez](#) Mon, Mar 19, 2012 [FPT-40/80 Fingerprint Terminal](#) 0 4073


AMANO.

Introduction

Setting up the FPT 40 with Time Guardian.

When the FPT 40 is hooked up to a PC with the commstick. Time Guardian may not detect it.

Go to Setup>Wizard then select the Clock tab(Which should look like this):


 Setup Wizard

General Department Pay Code Schedule Pay Class Exception Employee Clock Login


Do you have time attendance terminals (MTX-15, Hand Punch, FPT-40, etc.)?

☐ No
☒ Yes


Do you want to configure Terminal Validation?
Note: Send down Employee & Department info to terminal(s)



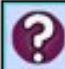
☐ No ☒ Yes  **Terminal Validation**

Do you want to configure Bell Schedule(s)?
Note: Send down schedule to ring bell

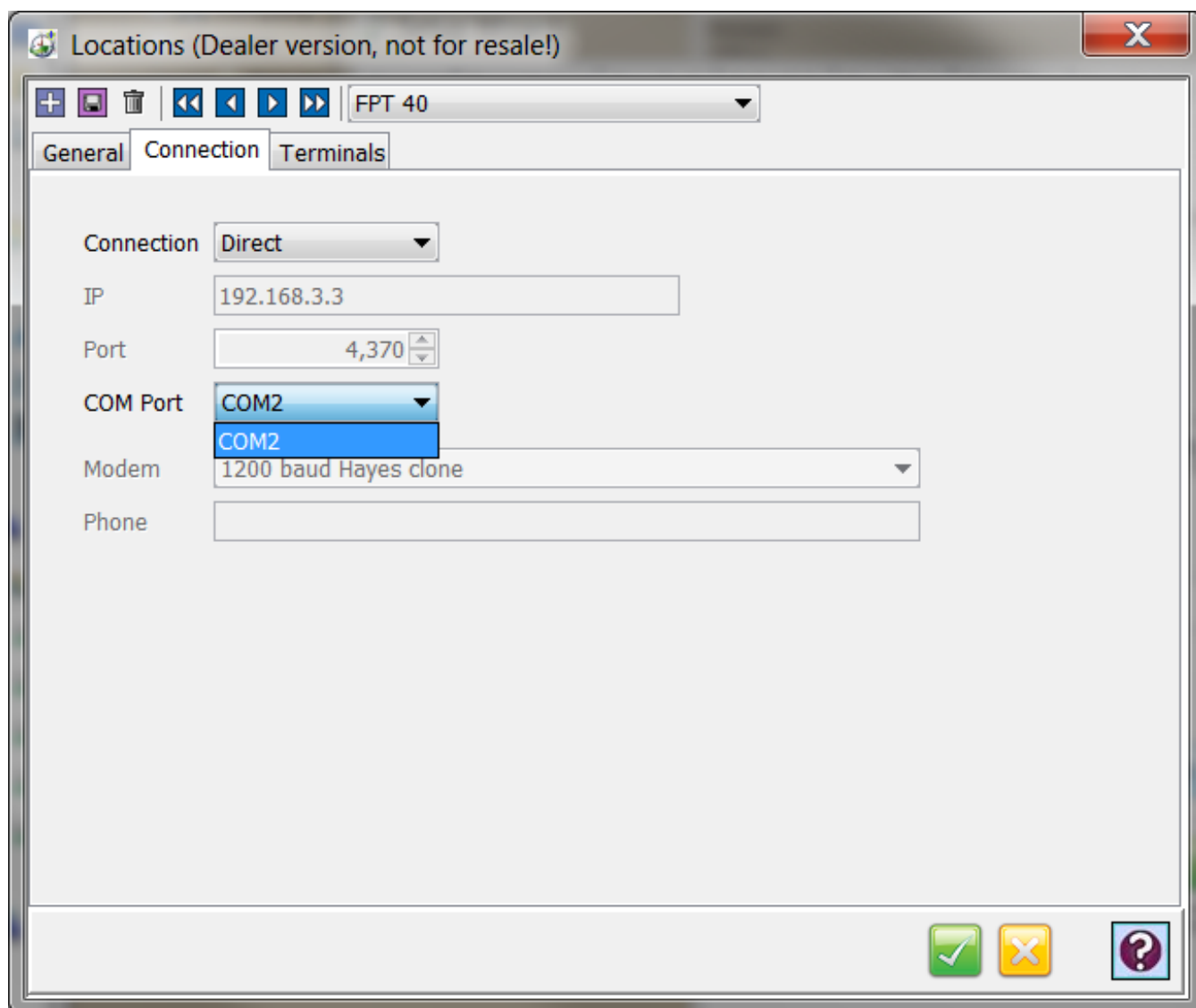
☒ No ☐ Yes  **Bell Schedule**

Do you want to configure your terminal(s)?
Note: Configure location and discover terminals

☐ No ☒ Yes  **Location / Terminal**

Click on Location/Terminal. Then go to the Connection Tab. And select the highest com port number available. This is normally the commstick. Select the green check on the Location tab and the Wizard. Then go to Communications on the Tree and select the FPT 40 and try setting the time.



If these steps do not establish communications then please call support at 800-896-7035

Conclusion

Thank you for your time, and have a great day. As always, feel free to submit ideas on topics you want addressed in the Amano Knowledge Base using the comments feature.

Amano Cincinnati, Inc. reserves the right to make equipment changes and improvements which may not be reflected in this article. Portions of this article may have been updated to include the latest hardware or firmware version, if applicable. Amano assumes no liability for errors and/or omissions. If you should find any errors or unclear information, please notify Amano by posting a comment.

Customer Support Information	Call toll-free in the U.S.: 800-253-9836 (outside U.S. call 973-364-0294) or Fax: 973-364-1091 Mailing address: Amano Cincinnati, Inc., 140 Harrison Ave., Roseland, New Jersey 07068 Web site: www.amano.com/time • E-mail: support@amano.com
---	---

Online URL: <http://tkb.amano.com/article.php?id=458>