

Configuration file c:conftg.conf not found

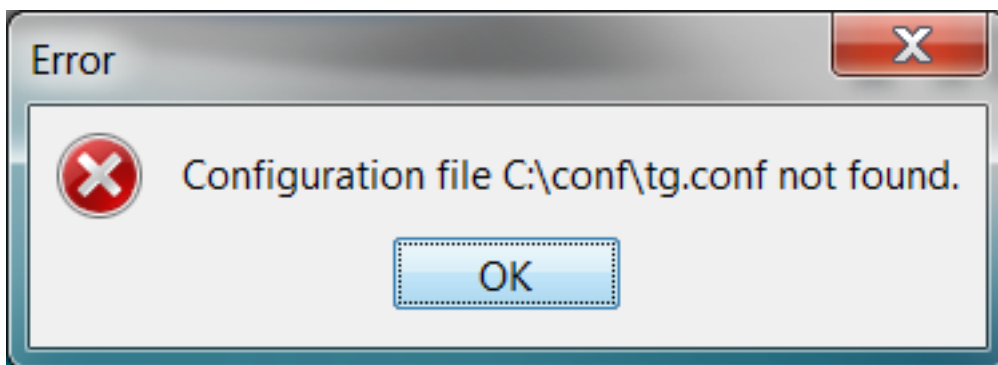
463 [David Lopez](#) Tue, Mar 20, 2012 [Document](#), [How To's, Tricks, Tips](#), [Time Guardian Series](#), [Time Guardian Series \(TG 5.x, TG Plus 2.x, TG Pro 4.x\)](#) 0 8183

This error is caused by putting the wrong path in during the Client install of Time Guardian. The client install asks:

Where is the Time Guardian Server installed?

The install defaults to C:

If you leave this in the box then the error below will show up when you try to run the program.



You need to provide a valid directory where the Time Guardian Server is installed EXAMPLE:

Z:\Time Guardian

Once you provide a proper path back to the Server you should be able to log in without issue.

Conclusion

Thank you for your time, and have a great day. As always, feel free to submit ideas on topics you want addressed in the Amano Knowledge Base using the comments feature.

Amano Cincinnati, Inc. reserves the right to make equipment changes and improvements which may not be reflected in this article. Portions of this article may have been updated to include the latest hardware or firmware version, if applicable. Amano assumes no liability for errors and/or omissions. If you should find any errors or unclear information, please notify Amano by posting a comment.

Customer Support Information	Call toll-free in the U.S.: 800-253-9836 (outside U.S. call 973-364-0294) or Fax: 973-364-1091 Mailing address: Amano Cincinnati, Inc., 140 Harrison Ave., Roseland, New Jersey 07068 Web site: www.amano.com/time • E-mail: support@amano.com
---------------------------------------------	-------------------------------------------------------------------------------------------------------------------------------------------------------------------------------------------------------------------------------------------------------------------------------------------------------------------------------------

Online URL: <http://tkb.amano.com/article.php?id=463>