

Windows error 216 occurred while loading the Java VM

582 [Frank Mateo](#) Fri, Dec 13, 2019 [Time Guardian 6.0 Push Technology / Real-time / Face reader](#) 0 1456

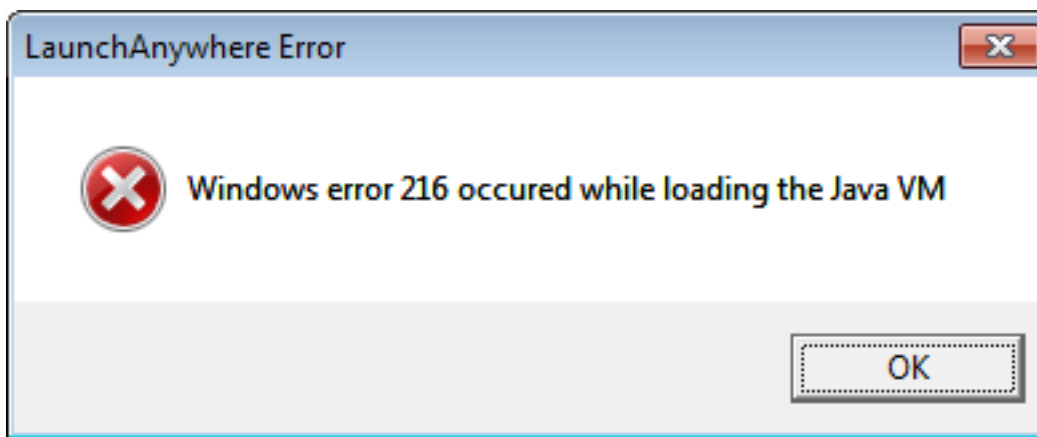
AMANO.

Introduction

Windows error 216 occurred while loading the Java VM

Problem:

The following error occurs when attempting to the install the TG-INSTALLER60



Resolution:

This error occurs when installing TG-INSTALLER60 on a 32Bit Operating System.

The installer for TG-INSTALLER60 is in 64bit format only.

Conclusion

Thank you for your time, and have a great day. As always, feel free to submit ideas on topics you want addressed in the Amano Knowledge Base using the comments feature.

Amano Cincinnati, Inc. reserves the right to make equipment changes and improvements which may not be reflected in this article. Portions of this article may have been updated to include the latest hardware or firmware version, if applicable. Amano assumes no liability for errors and/or omissions. If you should find any errors or unclear information, please notify Amano by posting a comment.

Customer Support Information	Call toll-free in the U.S.: 800-253-9836 (outside U.S. call 973-364-0294) or Fax: 973-364-1091 Mailing address: Amano Cincinnati, Inc., 140 Harrison Ave., Roseland, New Jersey 07068 Web site: www.amano.com/time • E-mail: support@amano.com
---------------------------------------------	-------------------------------------------------------------------------------------------------------------------------------------------------------------------------------------------------------------------------------------------------------------------------------------------------------------------------------------

Online URL: <http://tkb.amano.com/article.php?id=582>