

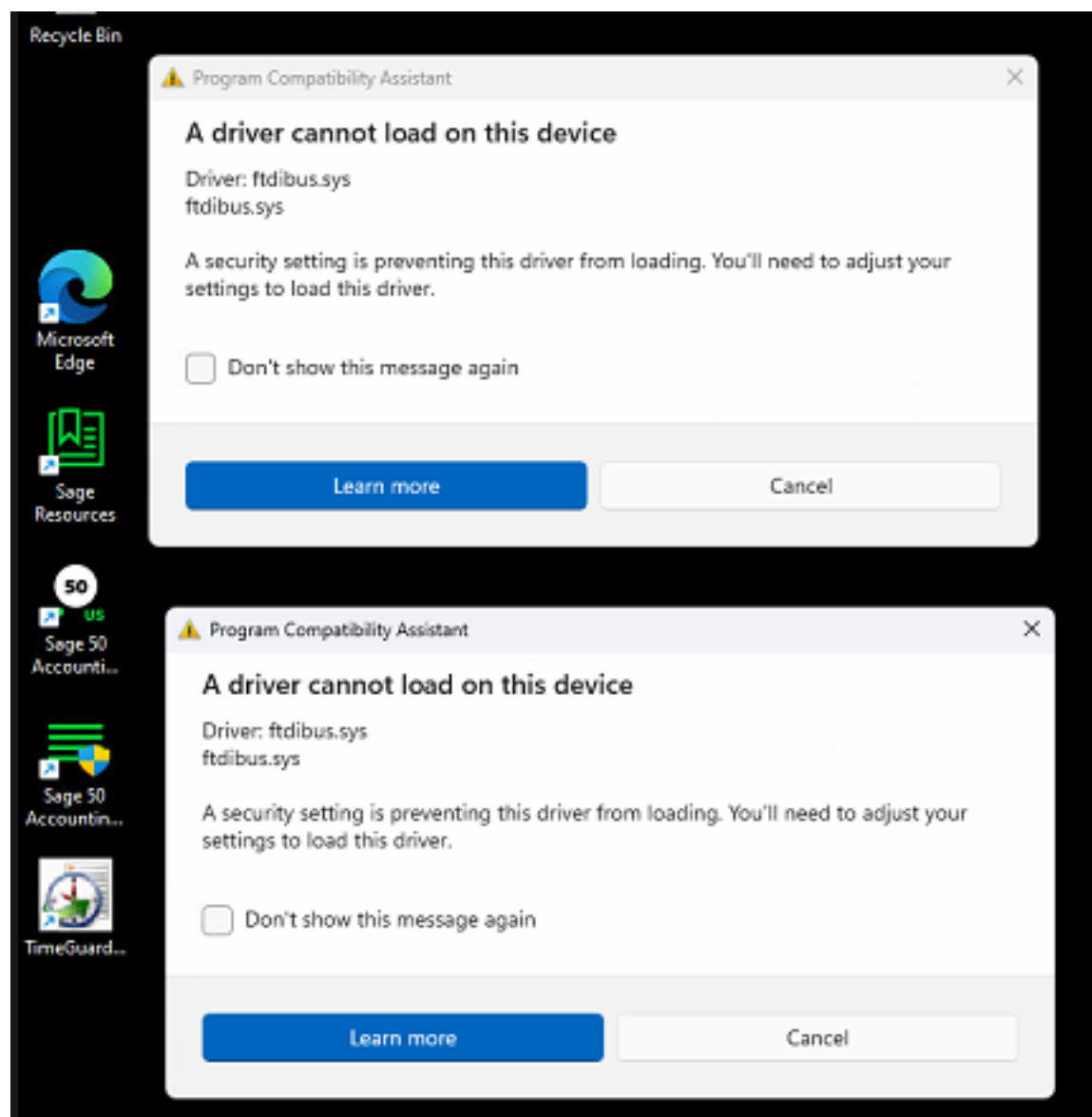
Windows 11 & Amano CommStick cable - A driver can't load on this device

611 [Frank Mateo](#) Fri, Dec 8, 2023 [Time Software/Systems](#) 0 374

AMANO.

Introduction

Problem:







Fix:

To turn off the memory Integrity setting

1. Go to the [Core isolation](#) page in Windows Security.
2. Turn the **Memory Integrity** setting **Off** if it isn't already. You'll need to restart your computer for the changes to take effect.

Notes:

- You can also open the Core isolation page by selecting **Start**  > **Settings**  > **Update & Security**  > **Windows Security**  > **Device Security** and then under **Core isolation**, selecting **Core isolation details**.
- Though the driver has a minor vulnerability that's preventing it from loading, it's most likely not malicious in any way.
- The driver name and company name that appear in the notification are the only reliable pieces of information that we have been able to gather about the driver.
- If an updated driver is unavailable from the driver manufacturer, it might be a good idea to contact them and inquire whether a fix is coming soon.

REFERENCE- <https://support.microsoft.com/en-us/windows/a-driver-can-t-load-on-this-device-8eea34e5-ff4b-16ec-870d-61a4a43b3dd5>

Conclusion

Thank you for your time, and have a great day. As always, feel free to submit ideas on topics you want addressed in the Amano Knowledge Base using the comments feature.

Amano Cincinnati, Inc. reserves the right to make equipment changes and improvements which may not be reflected in this article. Portions of this article may have been updated to include the latest hardware or firmware version, if applicable. Amano assumes no liability for errors and/or omissions. If you should find any errors or unclear information, please notify Amano by posting a comment.

Customer Support Information

Call toll-free in the U.S.: 800-253-9836 (outside U.S. call 973-364-0294) or Fax: 973-364-1091
Mailing address: Amano Cincinnati, Inc., 140 Harrison Ave., Roseland, New Jersey 07068
Web site: www.amano.com/time • E-mail: support@amano.com

Online URL: <http://tkb.amano.com/article.php?id=611>