

## PIX-3000 Ribbon Shield Replacement Kit

This kit (AJR-190650) supplies the components required to install a replacement ribbon shield in a PIX-3000-series time clock. This replacement item is designed to protect the ink ribbon and ensure print quality.

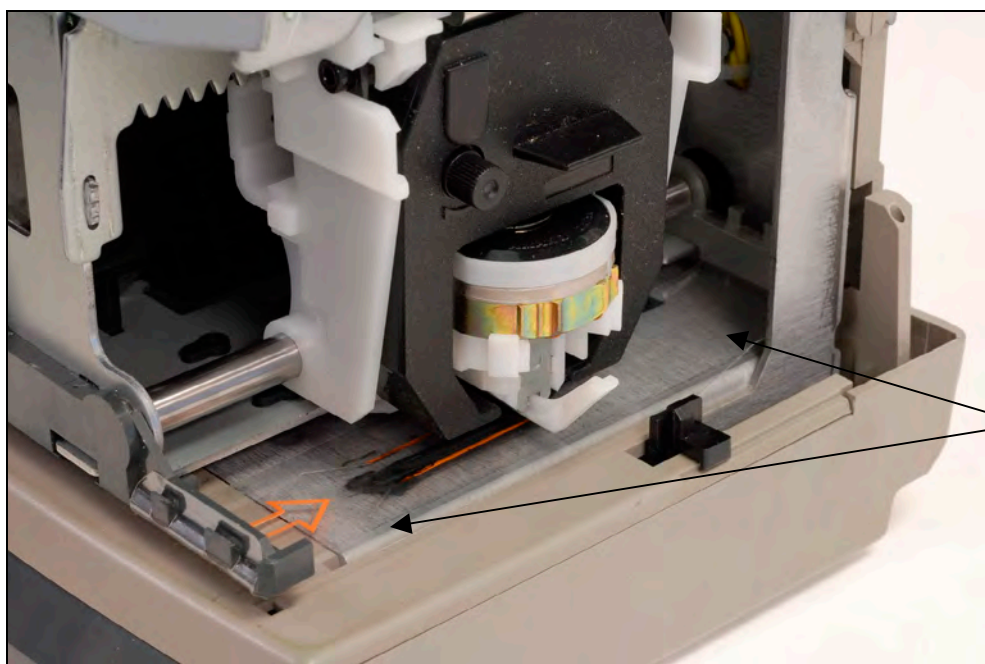
The kit contains the following components:

Part Number	QTY	Description
AJR-190700	1	Installation Guide (this document)
AJR-122201	1	Ribbon Shield (plastic strip, as illustrated in this document)

### Introduction

Over time, it is possible that the PIX-3000's ribbon shield (a clear plastic strip) may become torn or otherwise damaged, requiring the replacement of this part. Damage to the ribbon shield may be caused by misloading or forced insertion of a time card, causing stress to the part.

As seen below, the arrows point to the ribbon shield addressed in this document:



The ribbon shield is positioned directly below the ribbon cartridge.

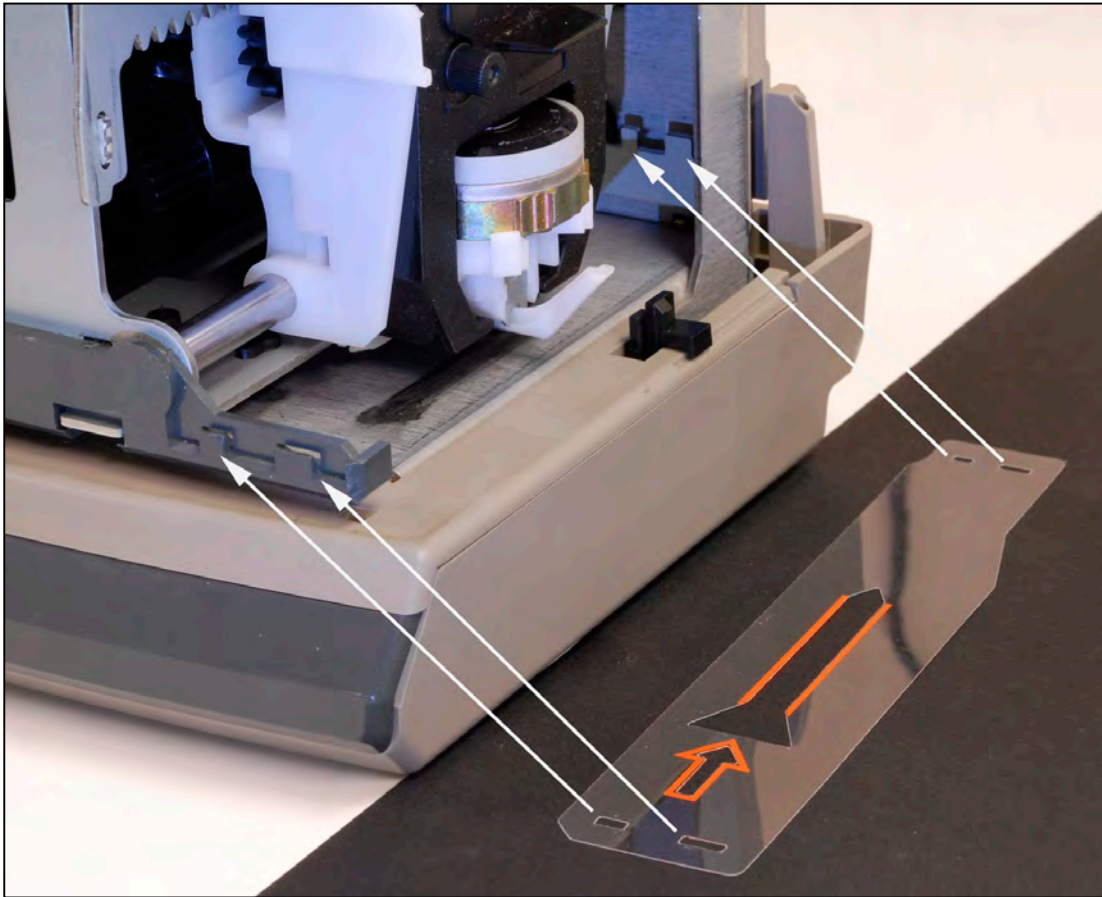
The purpose of the ribbon shield is to protect the ribbon and the print head from damage. It is not recommended to operate the time clock with a damaged ribbon shield.

---

## Installation Overview

---

The ribbon shield mounts to the time clock using a metal bracket in the back and a plastic bracket in the front, as seen below:



The instructions that follow describe the installation step-by-step.

To proceed, you will need a medium-size flat-blade screwdriver.

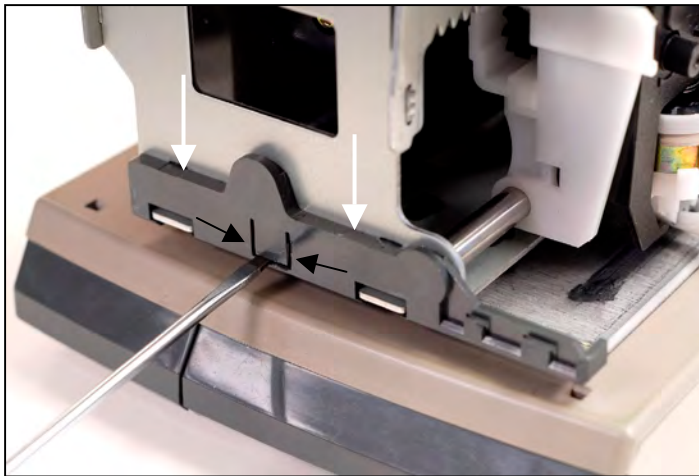
Please follow the instructions exactly. The ribbon shield can be damaged if improperly mounted.

---

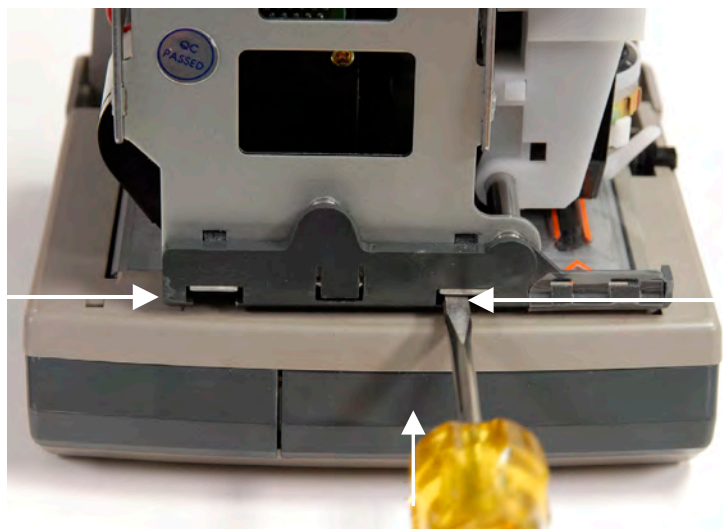
## Installation Instructions

---

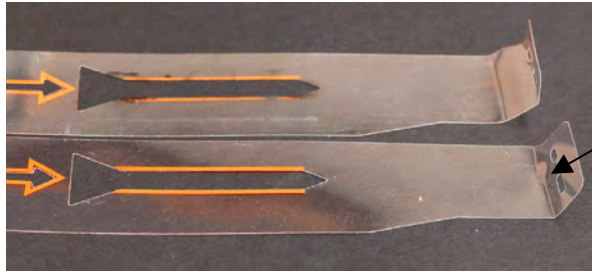
1. Place the time clock on a flat surface, unplug the clock and remove the cover. If the clock has a Full Power Reserve (FPR) battery backup, disconnect that as well.
2. Gently insert a screwdriver blade along one of the edges of the release tab of the plastic bracket (The plastic bracket is indicated by the white arrows and the safe locations to insert the screwdriver blade are indicated by the screwdriver and the black arrows). Pivot the screwdriver to pull the tab out slightly.  
\*\*Be careful here: If too much force is used, the tab will break.\*\*
3. While drawing the tab out, gently push down on the plastic bracket (white arrows) and the bracket will release from its mount.



4. If the bracket does not freely release, it may still be attached by its lower plastic tabs. Release these tabs by inserting the screwdriver blade in one or both of the locations seen below and gently pivot the screwdriver handle up, as seen below:

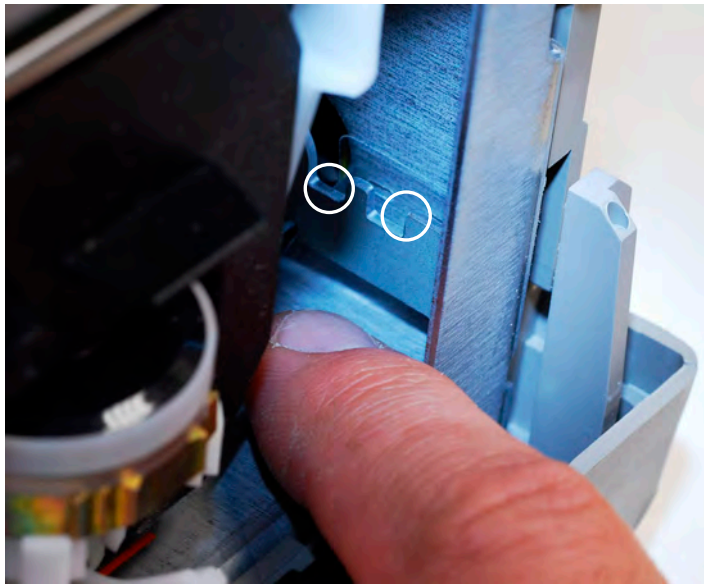


5. If the old ribbon shield is still in place, detach from the plastic bracket and rear metal bracket.
6. To ease attachment of the new ribbon shield, gently fold the end of the new ribbon shield so that its bend is similar to the old ribbon shield. Note that the fold is on the more narrow end of the shield:
7. Insert the new ribbon shield into the time clock, sliding it under the ribbon cartridge and under the



New shield (lower),  
gets a bend to  
assist mounting in  
the time clock.

metal bracket. Slide the shield until it appears slightly above the metal bracket:



8. Fold the shield over the metal bracket's two mounting posts (circled, above) to retain the shield on the metal bracket.

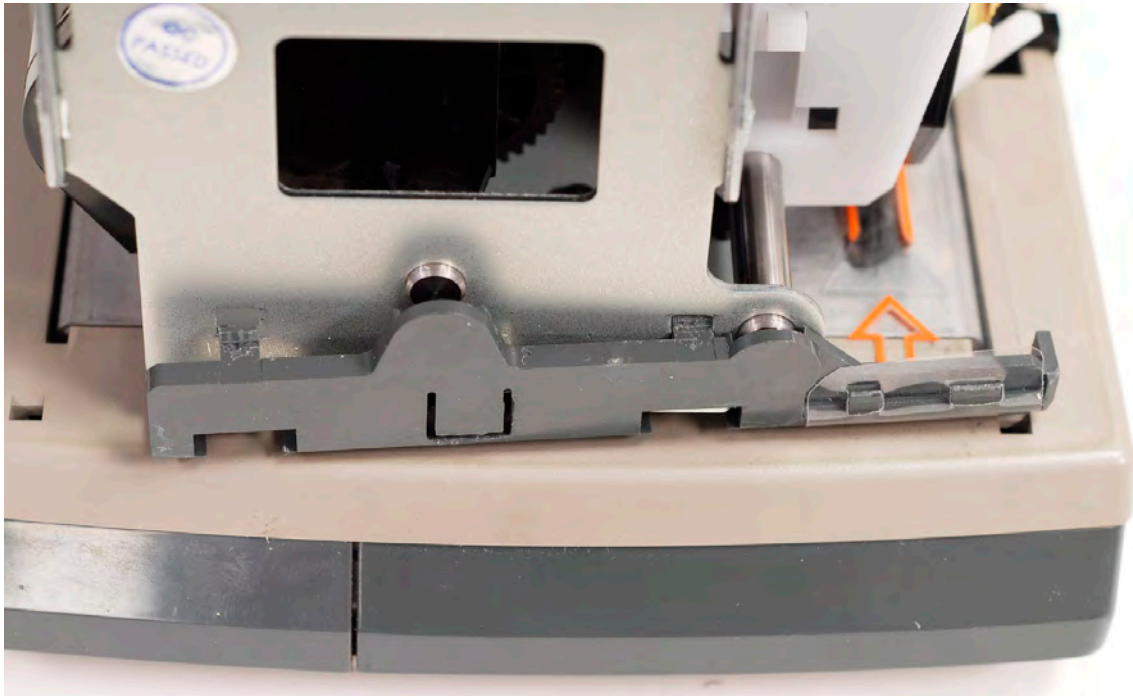


9. The shield should be locked in place as shown below:

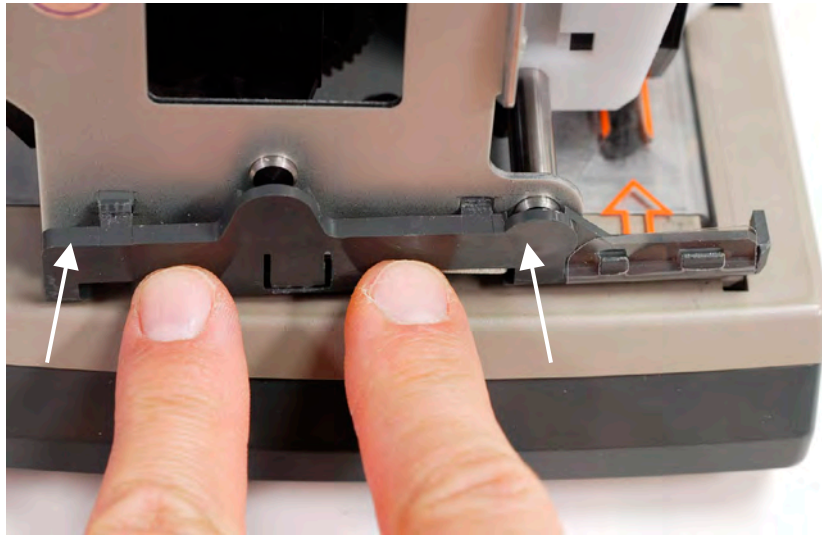


10. Maintain light tension on the shield so that it does not separate from the metal bracket.

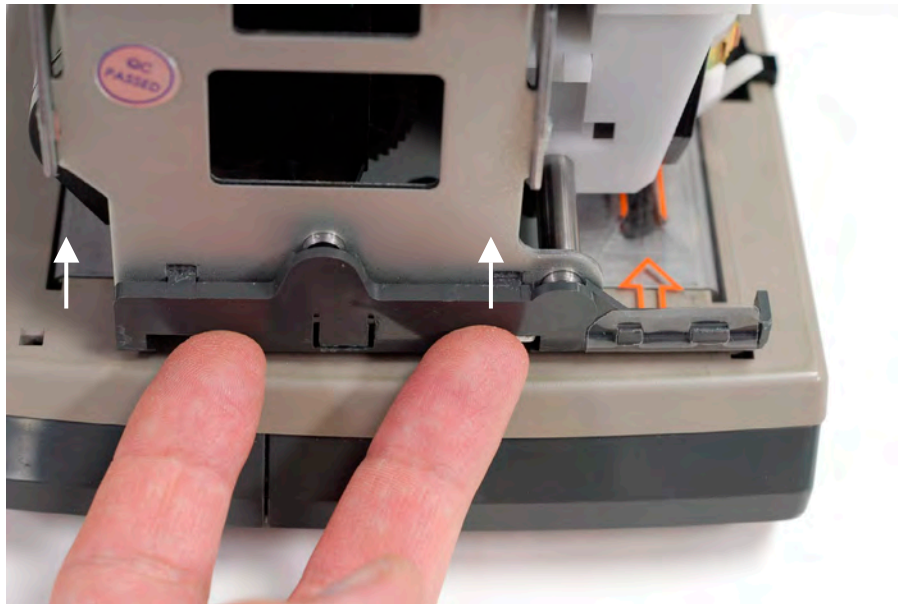
11. Position the plastic bracket in its original location, but do not lock in place. Note that it's slightly angled to facilitate reattachment of the shield. With fingers, grasp the end of the shield and remount the shield to the plastic bracket as shown. Do not use any tool to position the shield as the shield can be easily torn.



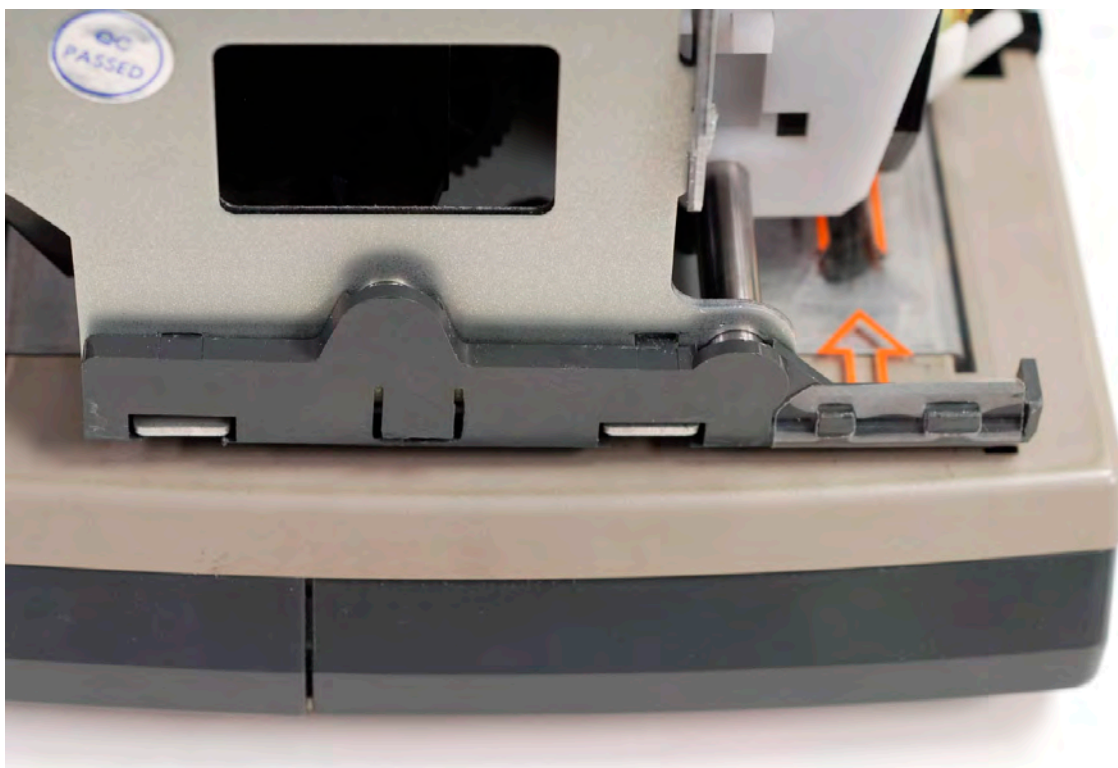
12. After successfully mounting the shield to the plastic bracket, push the bracket toward the clock as shown:



13. To complete the mounting of the bracket, now slide the bracket up. It should snap into place:



14. The bracket and ribbon shield look similar to below:



15. If the clock's battery backup (FPR) was disconnected, reconnect it. Return the time clock's cover. Plug in the clock. The installation is complete.

---

## Ordering

---

Replacement ribbon shields may be ordered from [www.amano.com](http://www.amano.com)

Part Number: AJR-122201

Cost: \$4.00 each

