



## How to hard reset the MTX-15



A Company of the **AMANO** Group



Primary Business Address  
140 Harrison Ave  
Roseland  
New Jersey

Phone: 800-896-7035  
Fax: 973-226-7863  
E-mail: [tgsupport@amano.com](mailto:tgsupport@amano.com)

Tel: 800-896-7035

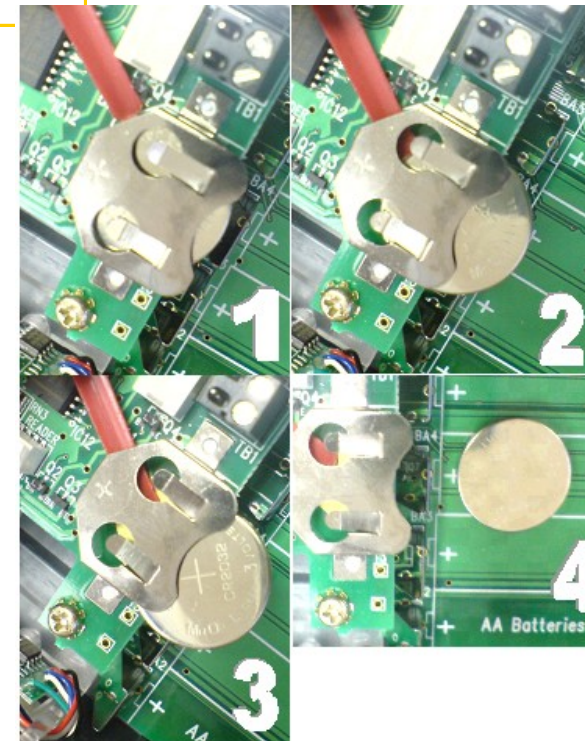
1



Disconnect  
power

2

Remove all batteries including shown below—discard  
any green plastic strip



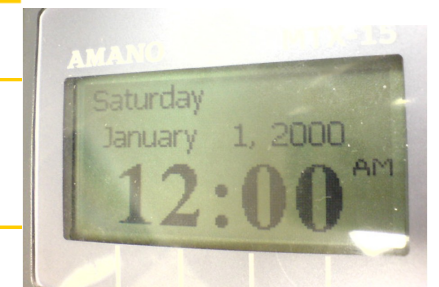
4



4a

Apply the power

5



Verify display shows Jan-1-2000 12AM and insert  
all batteries

3



Verify display is  
blank

Note: For version 4 or lower, autoupdate from the Communication  
menu in Time Guardian.

**If fatal error persists, insert lithium battery before step 4a.**