

# AMANO®

## MTX-15™ Installation Addendum

This addendum applies to the configuration of MTX-15 Network Terminals only.

When selecting Automatic Configuration (see Network Configuration in the manual), the IP address is obtained automatically from the network. In order to obtain the IP address to configure you Time Guardian Pro time and attendance software, you need a utility obtainable from Amano's FTP website to read the IP address of each MTX-15 Terminal on your network.

Follow this procedure to download and use the "dgdiscvr.exe" utility.

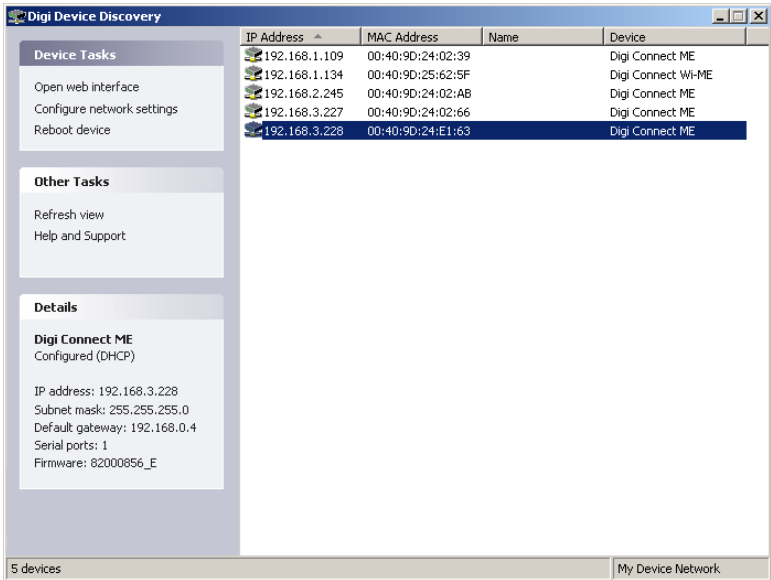
1. Record the MAC address from each MTX-15 being installed on your network. The MAC address is the string of numbers located on the bottom line of the ethernet module in the clock. Be sure to note the location of the clock for later reference.



MAC ADDRESS

2. Go to the following address (<ftp://ftp.amano.com/Time%20Guardian%20PRO/MTX15/>) at the Amano FTP site and download "dgdiscvr.exe". Place the executable in any convenient folder on your server.
3. Make sure all of your MTX-15 Network Terminals are connected to the network and are powered up.

4. Double click on “dgdiscvr.exe” to run the program. The following screen will be displayed:



5. The IP address of each terminal connected to the network is displayed in the left hand column adjacent to its corresponding MAC address. Use this information to configure your Time and Attendance software.