

How to change prism in FPT-40

Requirements:

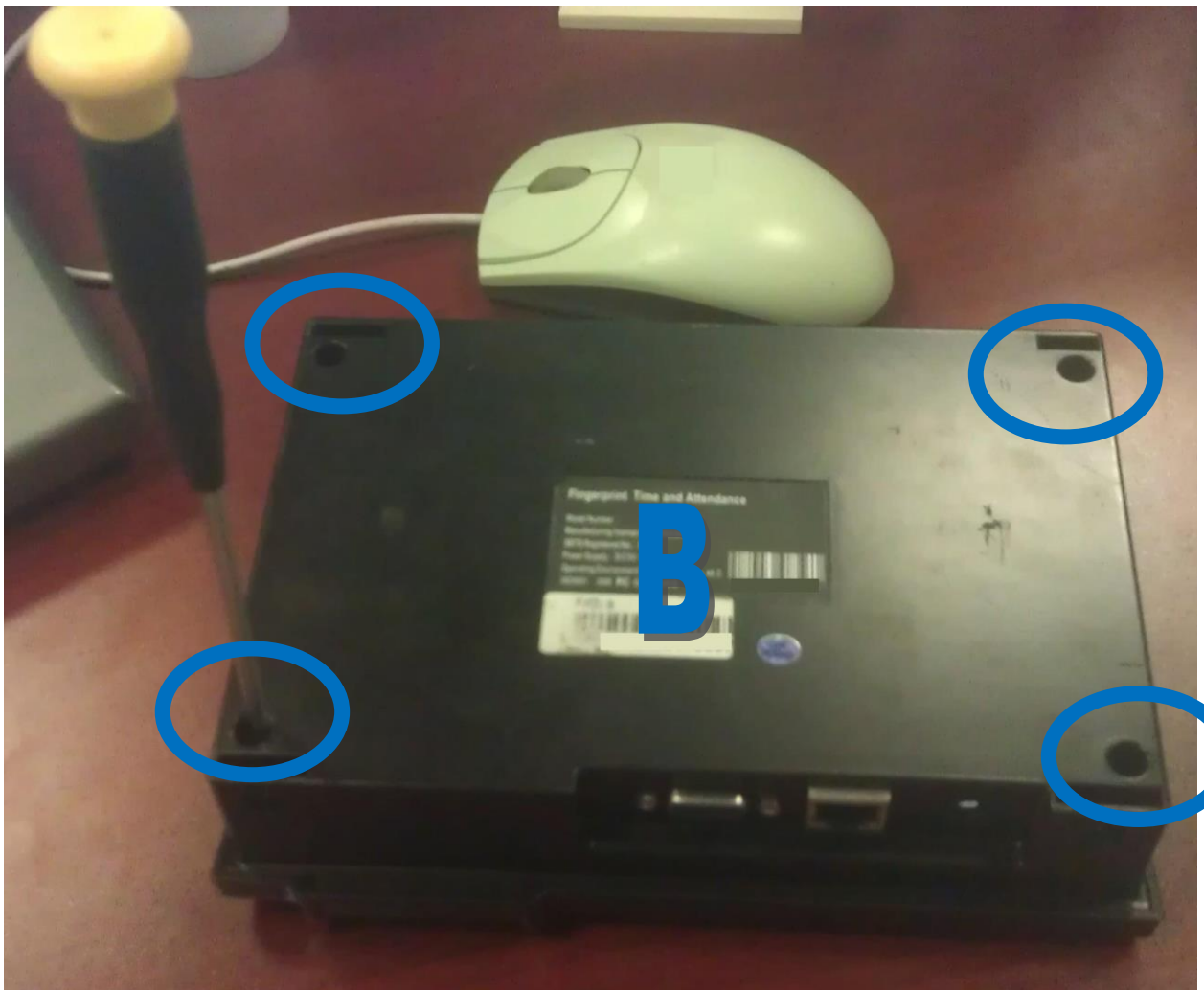
Philips screw driver



New spare prism

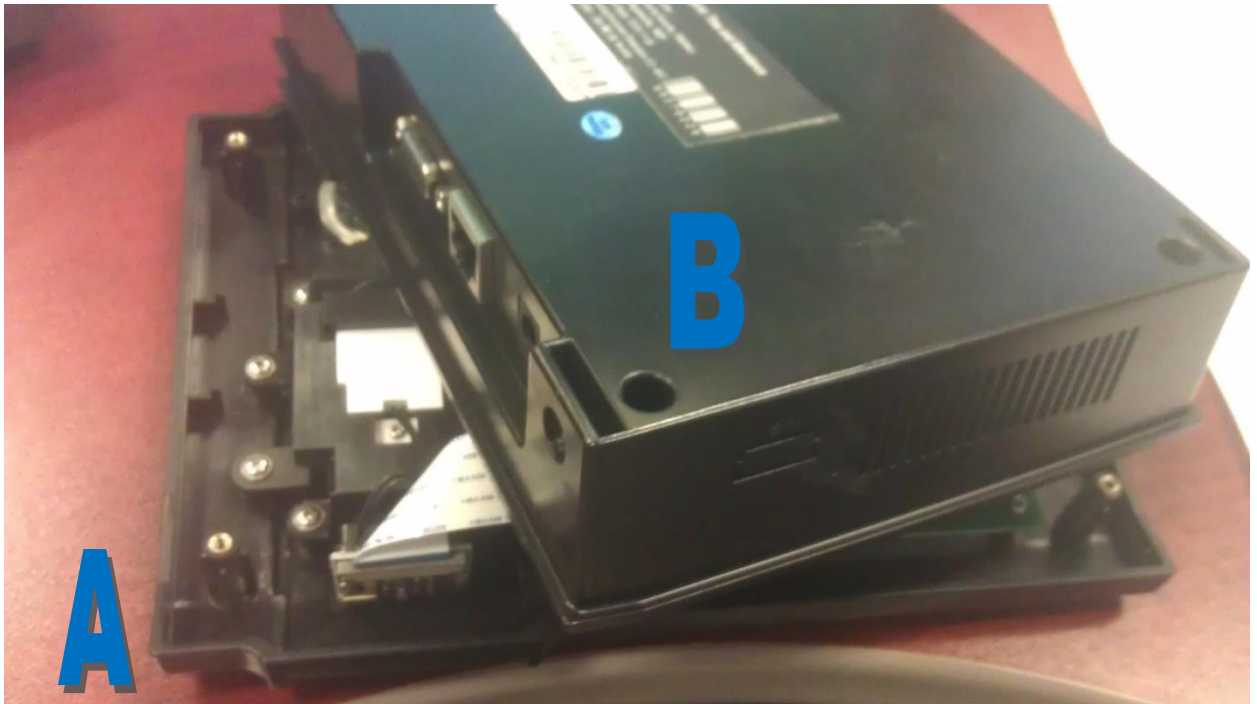


1. Disconnect all cables and remove 4 screws in back of unit



a.

2. Split enclosure A from B and position as shown below



a.

3. Remove 2 screws on each side (4 screws total) – some units may just have 2 screws with metal bracket



a.

4. Remove part C from D



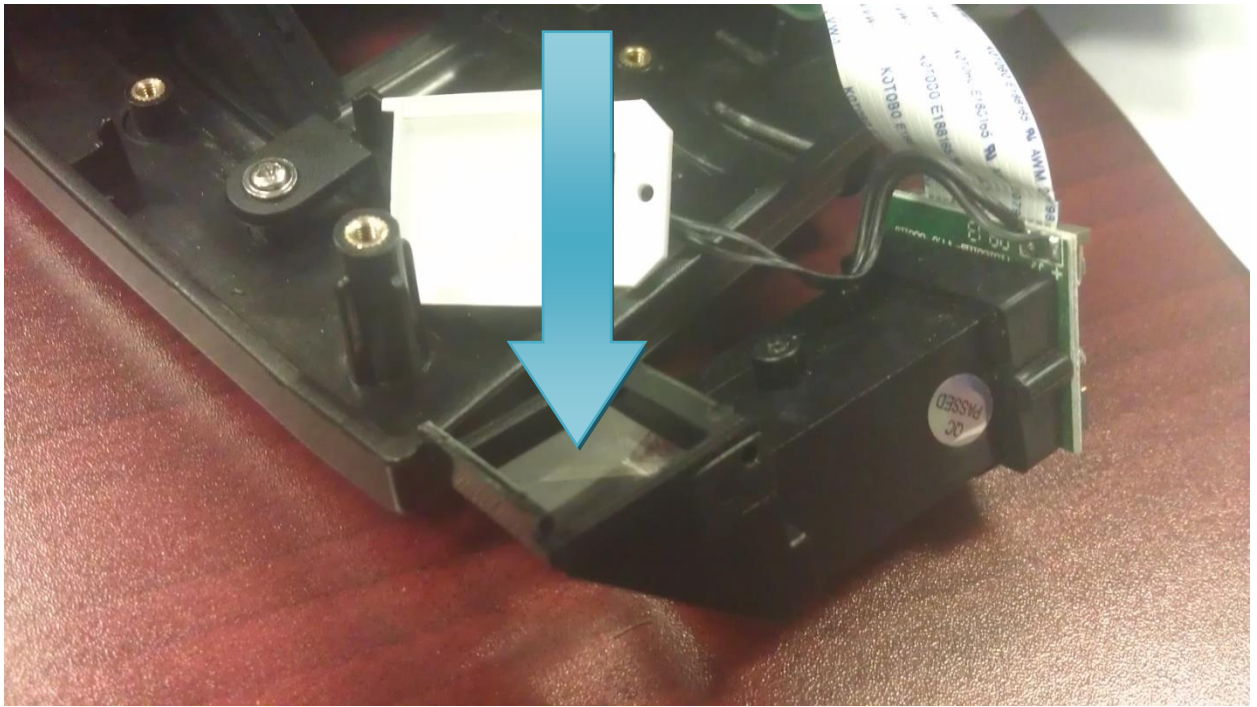
a.

5. Remove screws from part D (be careful with order of clear hard plastic film and clear thin flex film)



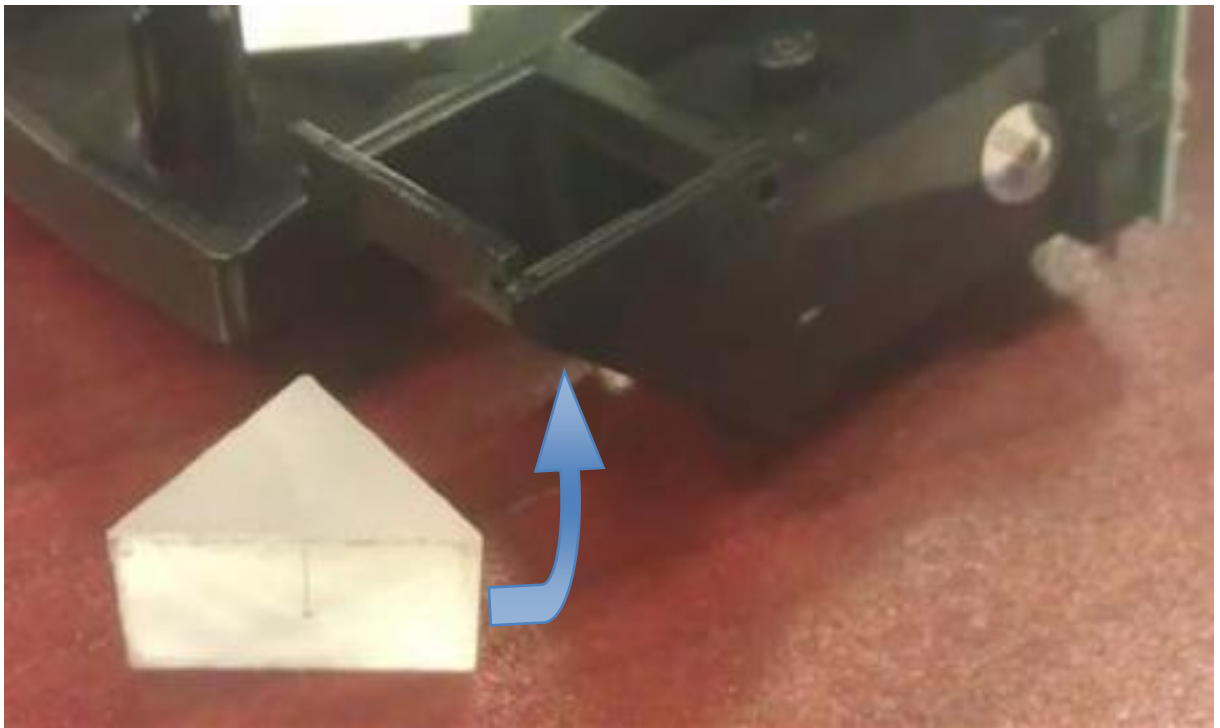
a.

6. Remove white plastic from part D and push old prism out (clear hard plastic goes to white plastic and clear thin film last)



a.

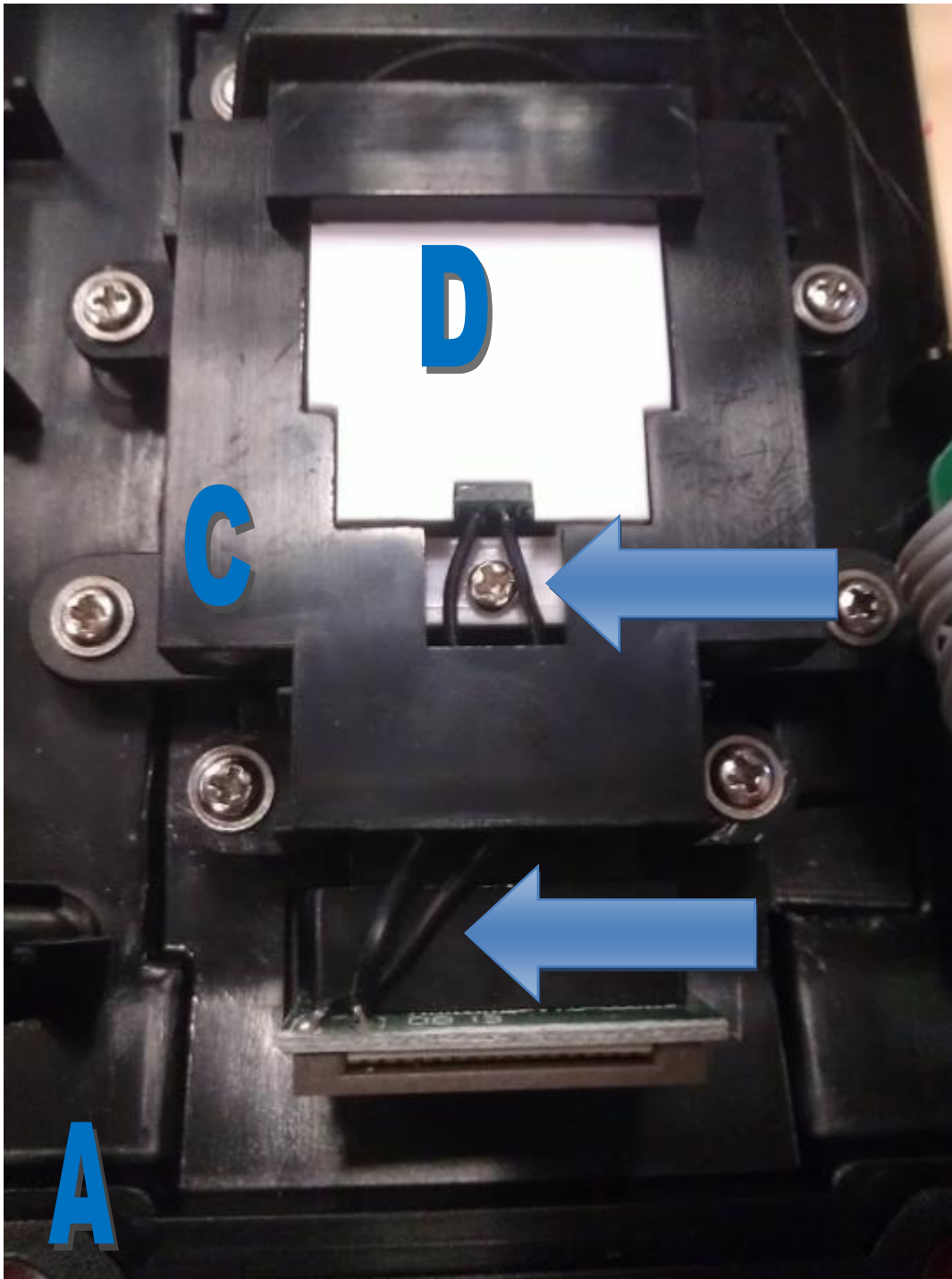
7. Insert new prism



a.

8. Insert 2 screws to part D
9. Place part D to enclosure A

10. Place part C above part D, note routing of black wire to the side when inserting back to enclosure A



a.

11. Insert 4 screws to enclosure A
12. Align and close both enclosures
13. Insert 4 screws to enclosure B