



AMANO CINCINNATI INC

---

Time Information Systems Support

How To Direct Connect Fingerprint

AMANO CINCINNATI INC

# How To Direct Connect Fingerprint

---



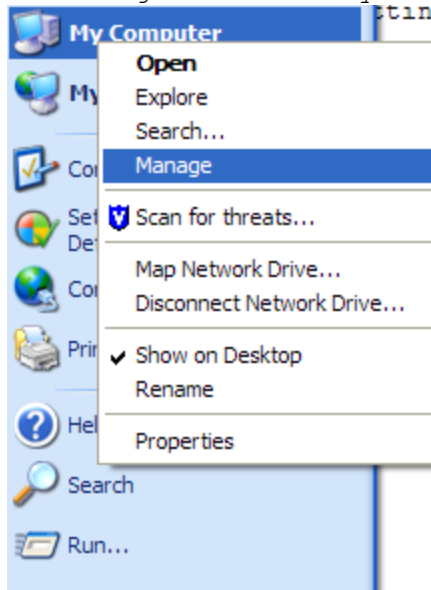
CommStick USB cable must be connected to PC then to serial adapter and finally to the FPT-40.  
Make sure emp and badge are identical:

Employee Number
25
Badge Number
000000025

© Amano Cincinnati Inc  
140 Harrison Ave • Roseland, NJ 07068-1239  
Phone 973.403.1900 • Fax 973.226.7863

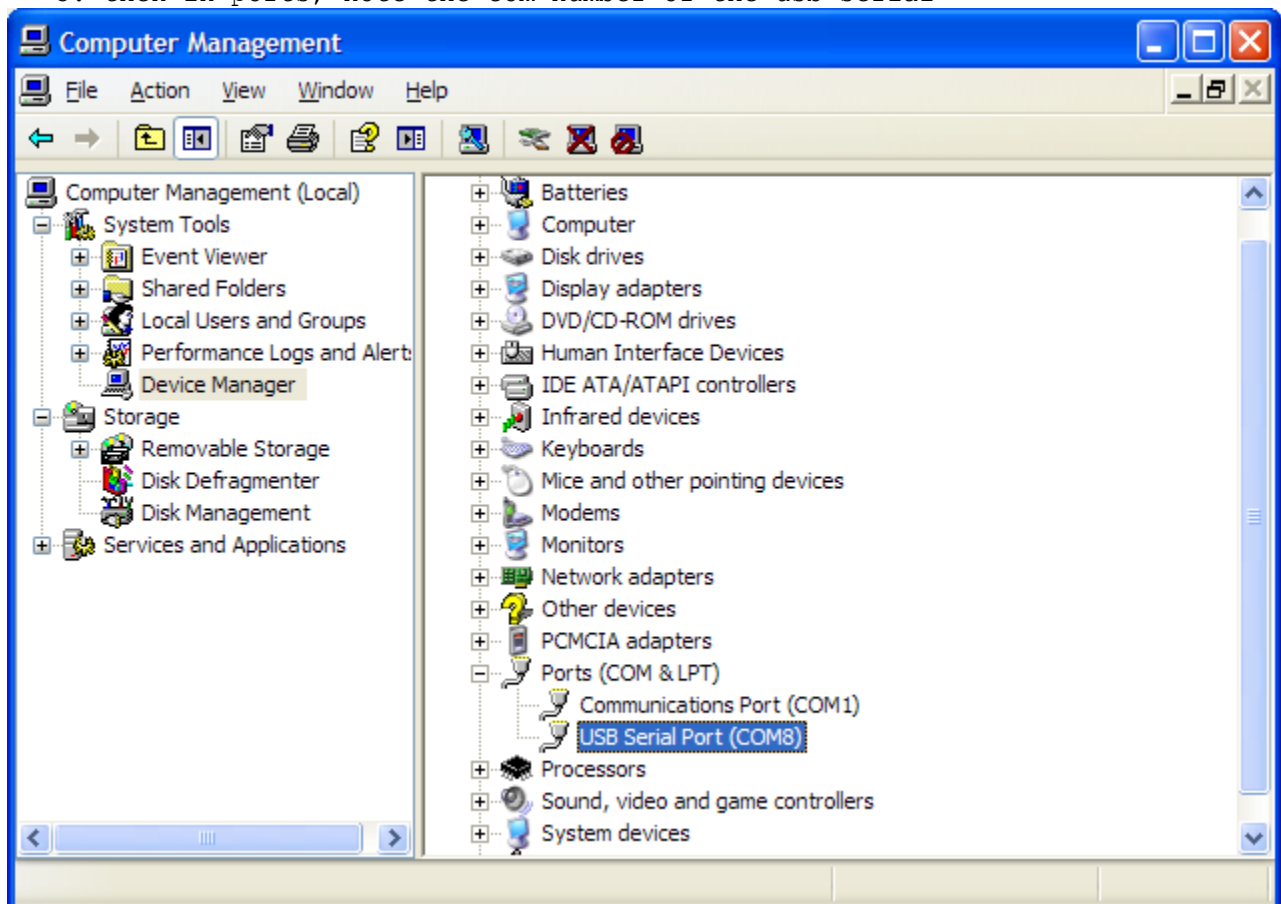
---

1. right click on my computer and manage

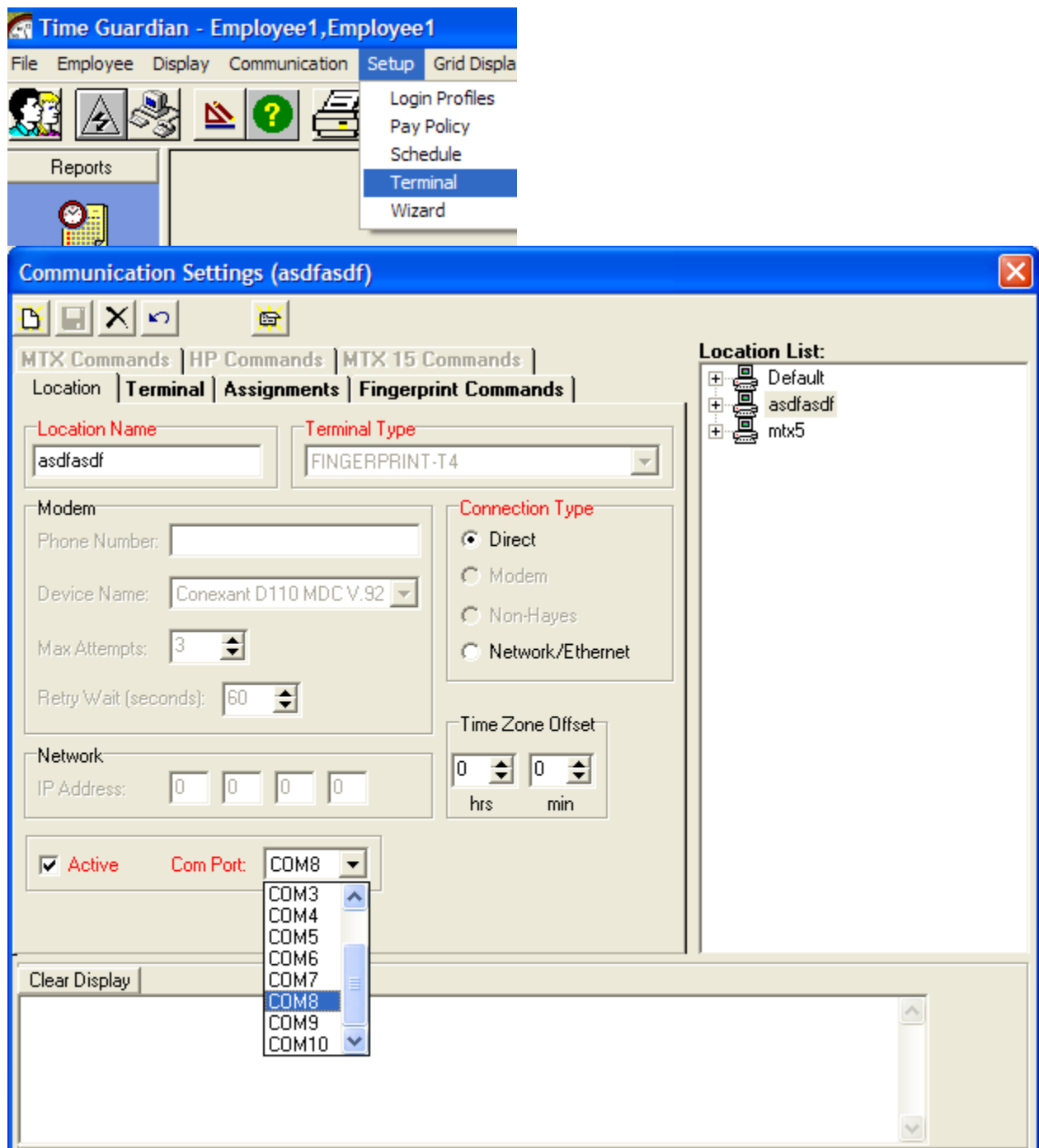


2. go to device manager

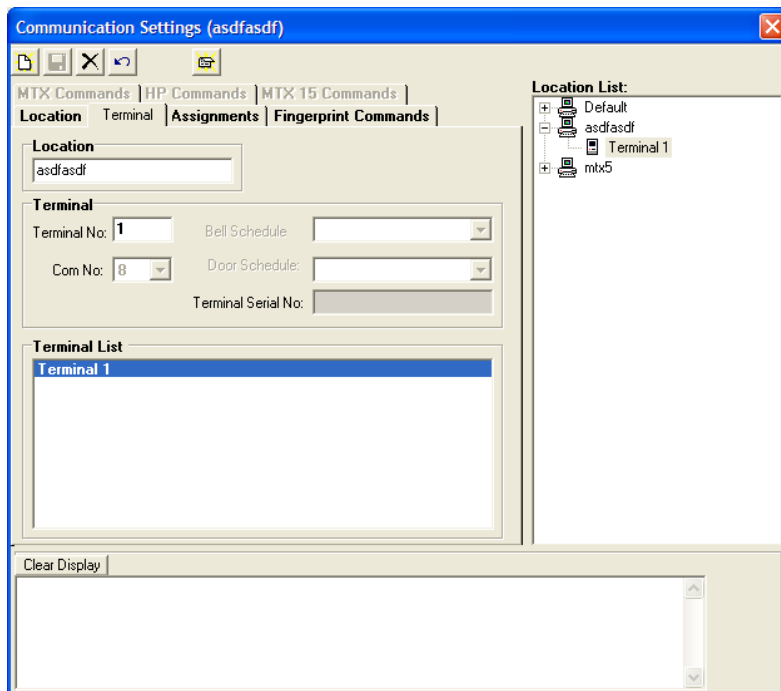
3. then in ports, note the com number of the usb serial



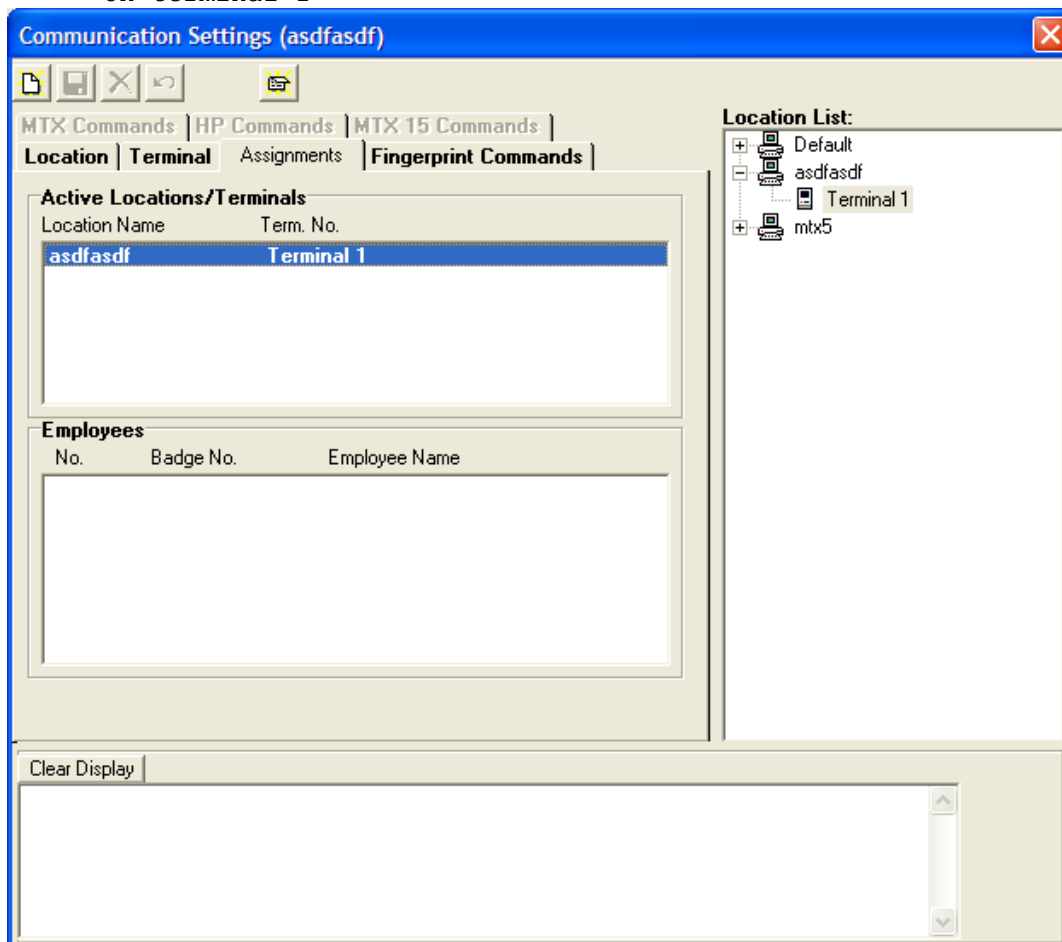
4. change the com number in the communication settings in TG



5. setup a new terminal with number 1, if none are listed

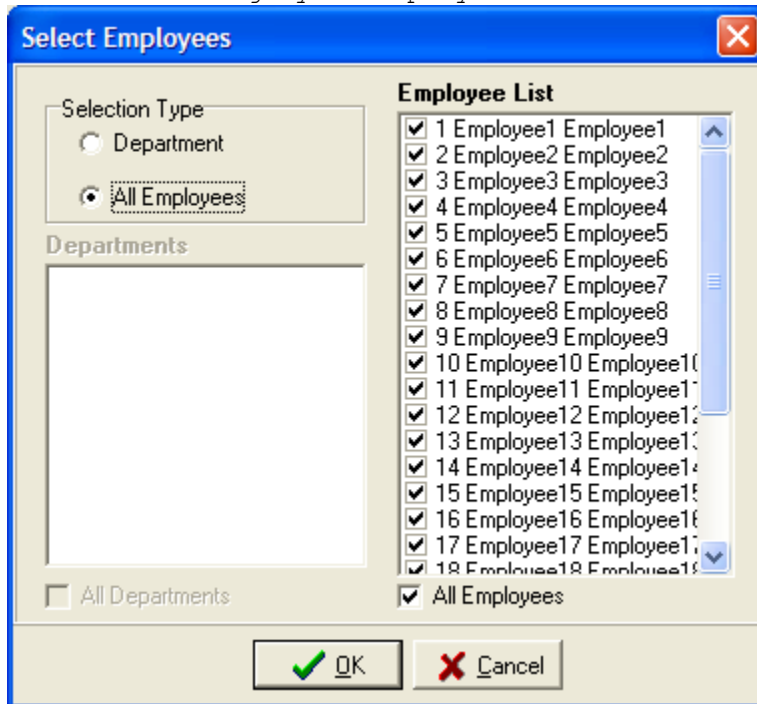


6. in the assignments tab, if the employees are not listed- double click on terminal 1

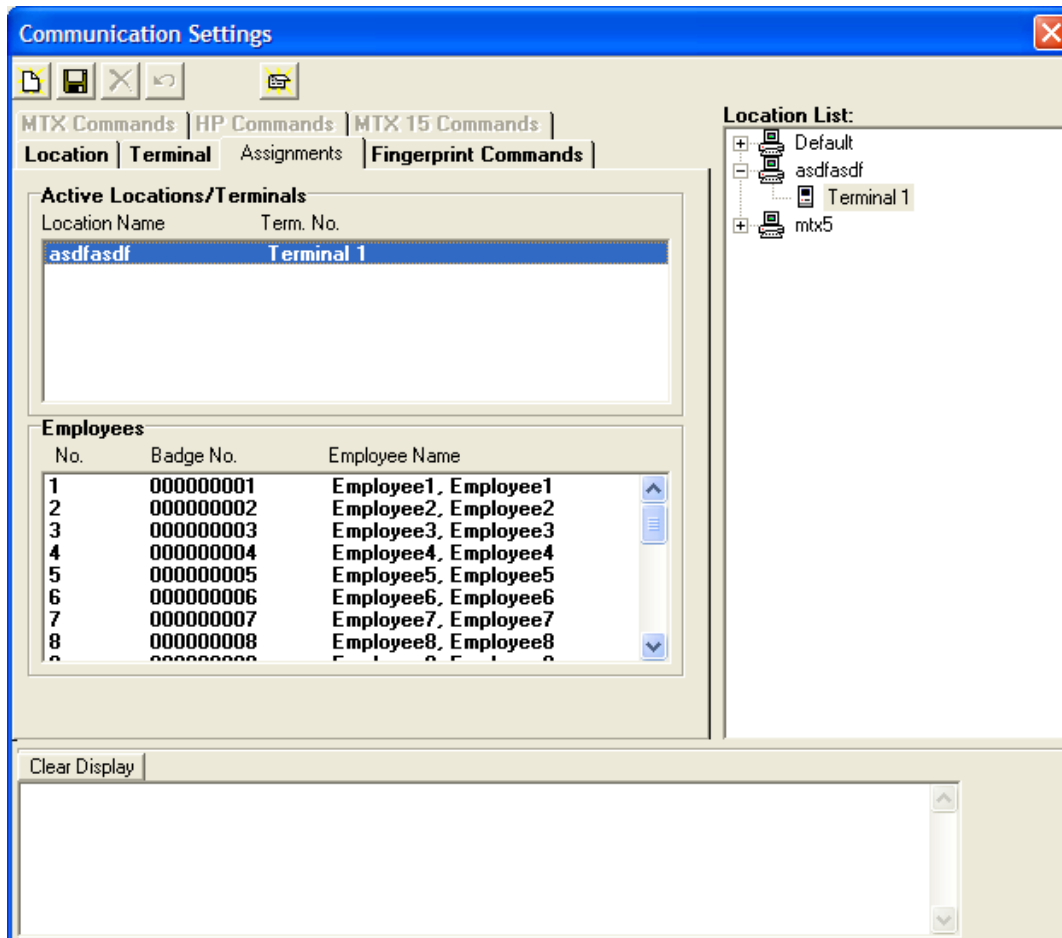


7. click on the new icon

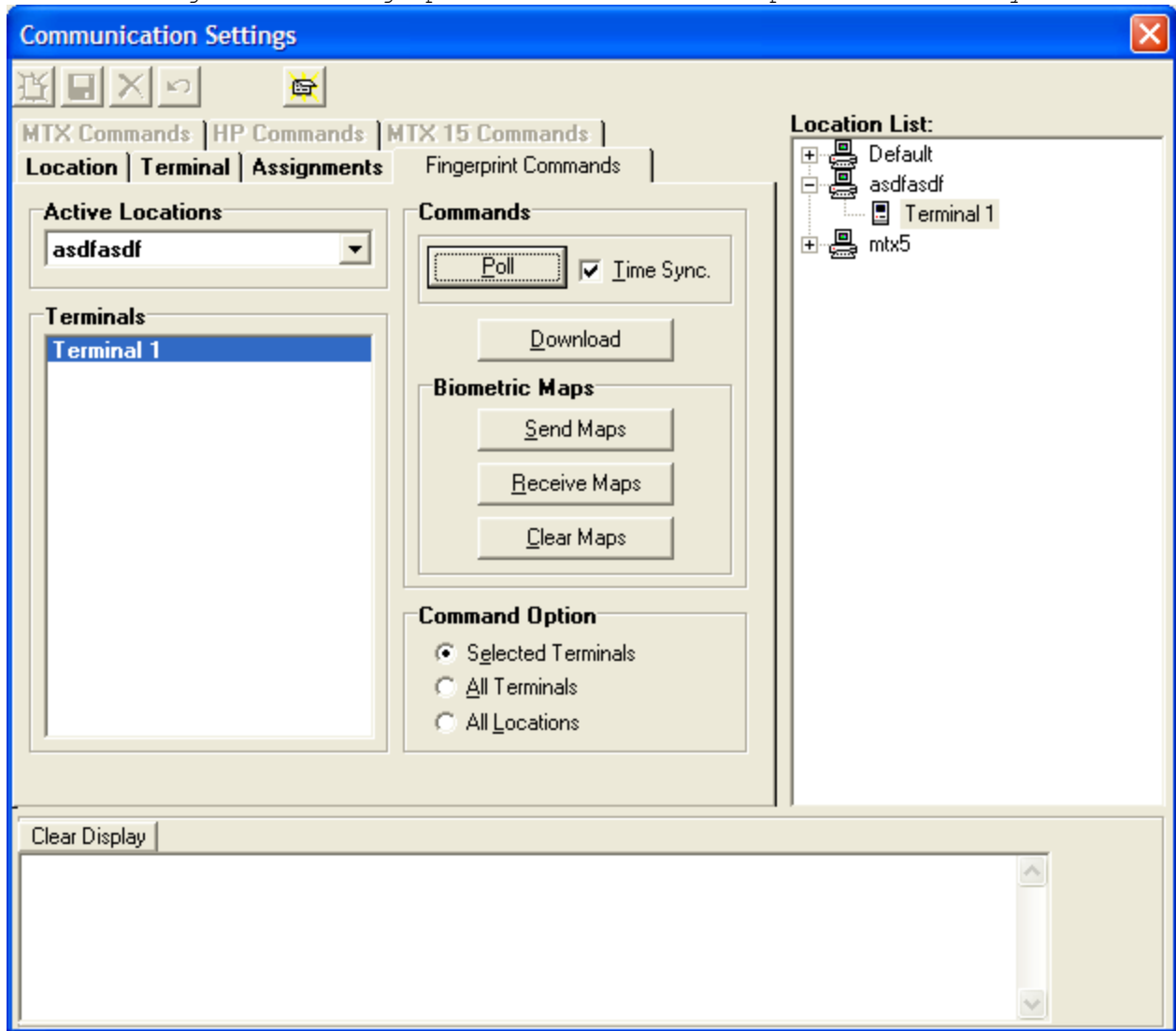
8. then assign your employees



9. which looks like below



10. go to the fingerprint commands tab and poll with time sync



11. then yes on the dialog box

